



# Announcing TIBCO Spotfire 3.3

---

TIBCO is pleased to announce the general availability of **Spotfire**<sup>®</sup> version **3.3**. Please read on for more details on this important new release of the Spotfire software.

## What's New in Spotfire version 3.3

# Table of Contents:

---

## I. **Collaborative:** Enhanced bookmarks simplify sharing of insights

- ❖ [Collaborative bookmarks - capture precise state of all dashboard elements](#)
- ❖ [Empowers mainstream Web Player users; bookmarks work across clients](#)
- ❖ [Increases productivity of distributed project teams & work groups](#)

## II. **Productive:** Accelerates operational agility

- ❖ [Free native iPad application; publish once, read anywhere \(desktop, browser or mobile\)](#)
- ❖ [Multiple visual enhancements further empower end users and speed insights](#)
- ❖ [New labeling techniques add analytic depth](#)

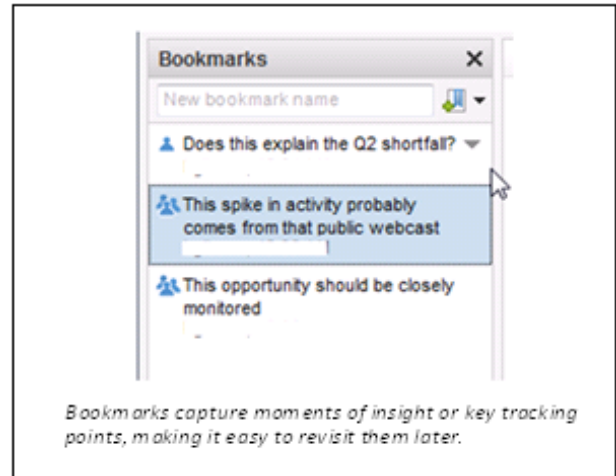
## III. **Helps IT:** Backend platform improvements ease burden on IT

- ❖ [Qualification Module validates installation & operation for highly regulated industries](#)
- ❖ [Massive gains in memory utilization enables IT to provide enterprise-class scalability](#)
- ❖ [Smart mappings of data sources ensures self-service query access](#)

## Harnessing the power of collaboration

*Collaborative Bookmarks capture insights & share them broadly with a simple click – right from your browser*

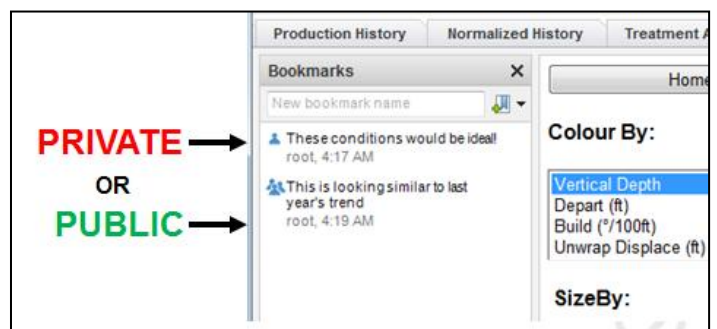
Interacting with visualized data can yield powerful insights. In Spotfire version 3.3, we've enhanced existing bookmarking capabilities because we recognize the value of immediately capturing and sharing a moment of insight. New in Spotfire version 3.3, Collaborative Bookmarking enables all Spotfire users (Web Player analysts as well as users of the full Professional and Enterprise Player clients) to capture a dashboard - its complete configuration, including markings, drop down selections, and filter settings – and, if desired, to share that visualization immediately with other users of that same dashboard. Similar to creating “favorites” in a favorite web browser, Spotfire's new Collaborative Bookmarks is a powerful capability that's ideal for distributed project teams, group decision making, and simply quick periodic access to key metrics.



## “See For Yourself!”

As you already know, your organization can make better decisions by monitoring and interrogating its data. When conclusions and decisions are driven by data, there is no better way to gain trust and alignment than to provide transparency right to the source. This is why Bookmarks in Spotfire 3.3 can be made “Public”. If you capture a Bookmark while analyzing data, you can choose to make it “Public,” which means that anyone else viewing the same Spotfire file will see the Bookmark you captured. When clicked, others will see exactly what you saw as you captured that Bookmark – including the file's filter settings, markings, and drop down selections.

If you don't want everyone to see your Bookmark sitting there in plain view, you still have a way to easily, yet discreetly, share it with others. Just grab the URL from the Bookmark's menu and paste it into your email, wiki, portal – wherever. People who click the link will launch the analysis straight into the previously captured state. You can send people to your insight using the thick client or a browser - your choice.



# Spotfire application for the iPad™!

*Now iPad users can easily interact with visualizations, quickly extract insights buried in data, and collaborate with colleagues - all from their personal iPad!*

To download the TIBCO Spotfire iPad application – Click here <http://itunes.apple.com/us/app/spotfire/id417436823?mt=8>

With the native Spotfire application for the iPad, you can now use:

*Touch-Enabled Dashboards – Right in Your Hand.*

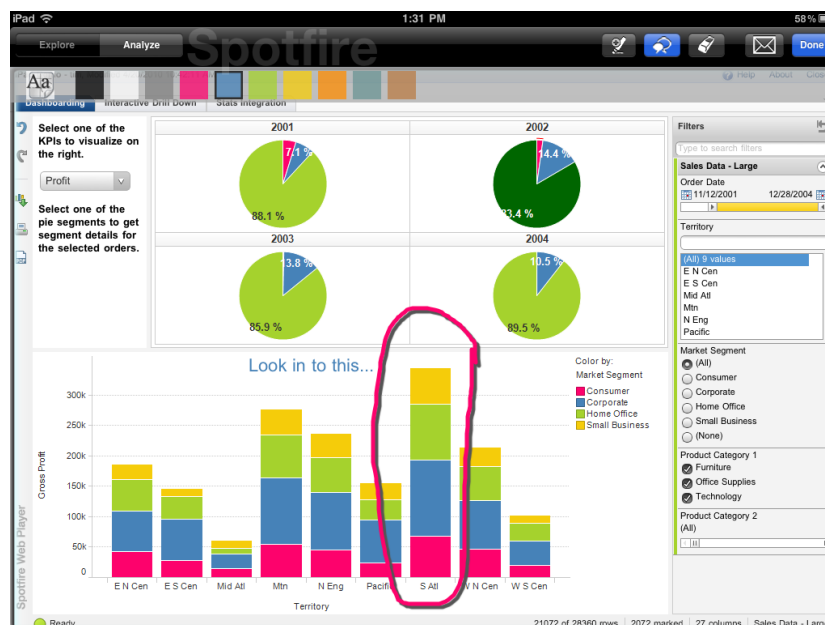
Interact with charts, graphs and tables in real time, users can tap, pinch or swipe the screen, with every movement providing a new view of the data instantly.

*Powerful Analysis – On the Go.* iPad users can access important information where and when they need it – whether looking at the latest update to a key metrics dashboard so questions can be asked and answered on the run, or running a predictive analytic application..

*Knowledge-Sharing – In a Mobile Environment.* Unlike some competing applications, Spotfire files don't require special preparation to be published on the web. All files viewable in Spotfire Web Player are iPad compatible as well.

*Decision Making doesn't have to happen in the Office.* With Spotfire for the iPad, not only can you open reports and dashboards, but you get all the analytics capabilities you'll need to make better, more data-driven decisions, faster.

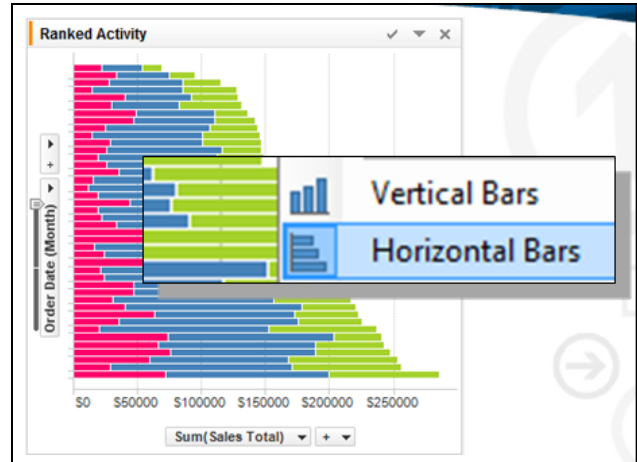
*Export and Send reports from the iPad.* Reached an interesting insight? Export your reports and visualizations to images or PDF files with just one touch.



# Visualizations to improve productivity

## Horizontal Bar Option

The Bar Chart can now be configured so that the bars extend horizontally. Not merely a matter of aesthetic preference, this option greatly improves the readability of the bar identifiers. Switching between horizontal and vertical bars can be done on-the-fly from the context menu of the Bar Chart so you don't miss a beat.



1. Horizontal Bars – they kind of speak for themselves

## Customizing Cross Tables

Condense your Cross Tables down to only the most important facts. Now you can limit the cross table to show only the top or bottom N values per category. The analyst uses column sorting to control which measure is used to judge top or bottom values. When used at the same time as the subtotal feature, you can get both your summary and your critical details right in the same place. Set these preferences in Cross Table > Properties > Sorting.

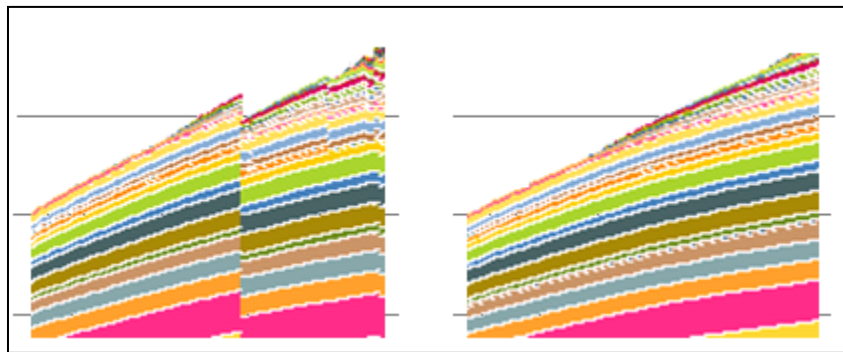
Product Category 1	Product Category 4	Total Sales ▼	Avg Profit
FURNITURE	<b>Subtotal</b>	£1,190,948	£79
	Hon Olson Stacker Chairs	£98,588	£2,534
	Hon 5100 Series Wood Tables	£81,264	£645
	Hon 4060 Series Tables	£47,995	-£849
	SAFCO Arco Folding Chair	£46,314	£2,583
	Hon Racetrack Conference T...	£45,624	£2,606
	...	...	...
OFFICE SUPPLIES	<b>Subtotal</b>	£1,499,756	£67
	Tennsco Double-Tier Lockers	£73,335	£1,098
	Harmony Air Purifier	£55,906	£1,958
	Tennsco Single-Tier Lockers	£49,700	£1,145
	Letter Size Cart	£40,627	£831
	Fellowes Econo/Stor® Drawers	£40,529	-£47
	...	...	...

2. This cross table is configured to only show the "top 5" values per category. The user has sorted by the Total Sales column in descending order, so this chart shows the top 5 by total sales per category. If the user sorts by "Avg Profit", he would see the product with the top 5 highest (or lowest!) profits instead.

\*Note that the subtotals are still calculated for the unseen values beyond the top 5

## Compensate for Missing Time Series Values

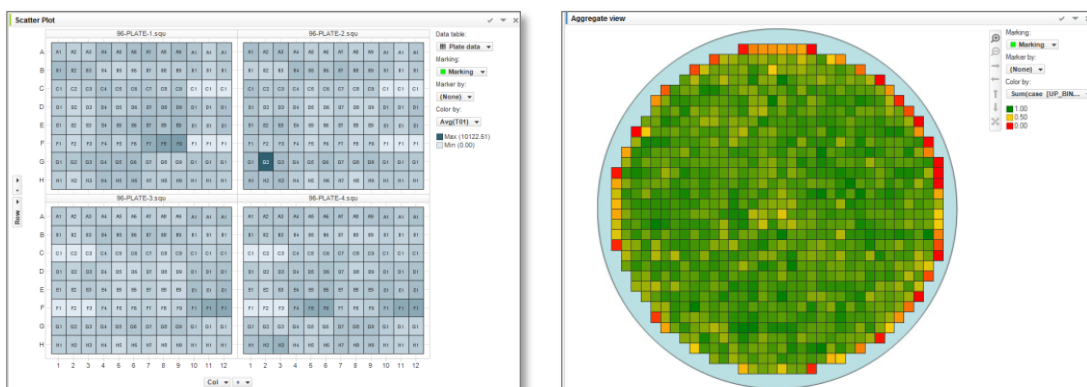
Spotfire 3.3 has the option to show time series as a more natural continuum. Prior to 3.3, categorical axes in Spotfire were purely data driven. As a consequence, plots with date or time hierarchies weren't capable of illustrating missing time periods when no data existed for them. Now in 3.3, you can configure axes to show complete time hierarchies for a more natural, comprehensive view of time series data. For example, missing data would have made cumulative stacked bar charts appear jaded. With Spotfire version 3.3, though, these visualizations appear much more elegantly, as missing values can be accounted for.



3. Prior to 3.3 (left), cumulative trends over time could appear jagged due to missing data. In 3.3 (right), the option to compensate for missing values will maintain continuity of cumulative series to aid interpretation.

## Tiled Marker for Grid Layouts in Scatter Plot and Map Chart

A new Tiled Marker option makes it easy to visualize and analyze grid-like data in Spotfire. Typical application areas include visualizing high throughput screening plates in research, as well as semiconductor wafer layouts for high-tech manufacturing.



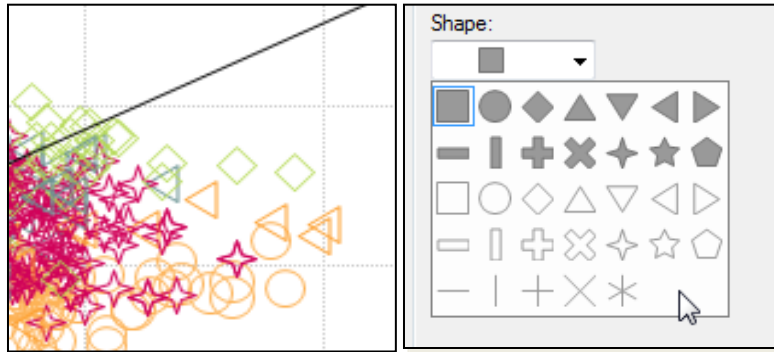
4. The tiled marker type forms seamless grid, which is more intuitive and easy to navigate for certain applications.

Labels for this tiled marker type are specially designed to work smoothly for these analysis cases – labels are centered and will only appear if enough screen space exists to display

them. Also relevant for these analytic cases: the scatter plot now supports mouse-wheel zooming for quick navigation of these kinds of visuals.

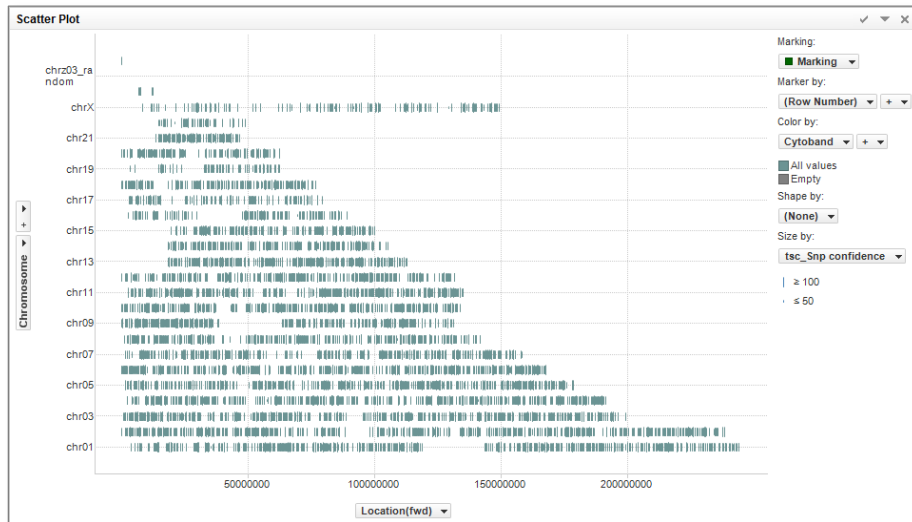
## Hollow Markers in Scatter Plot and Map Chart

Hollow markers can convey a better sense of overlap and density in your data, and also offer a greater diversity of choice to help distinguish data categories.



5. New marker types better illustrate overlap and density, and help distinguish more data categories at once.

New horizontal and vertical hash marker types are helpful additions, for example, when visualizing chromosome maps in genomic research:



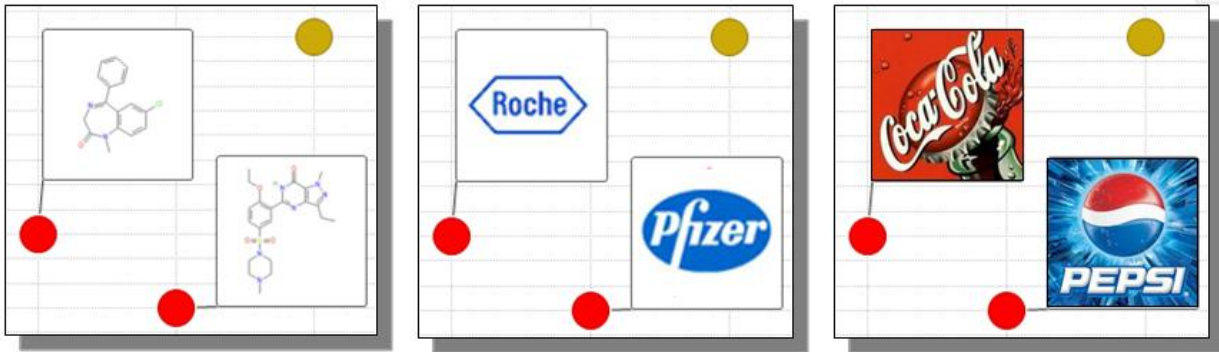
6. More natural chromosome maps in 3.3 using the new vertical or horizontal marker type.

## Improved Labeling

### *Use Images as Labels and Tooltips*

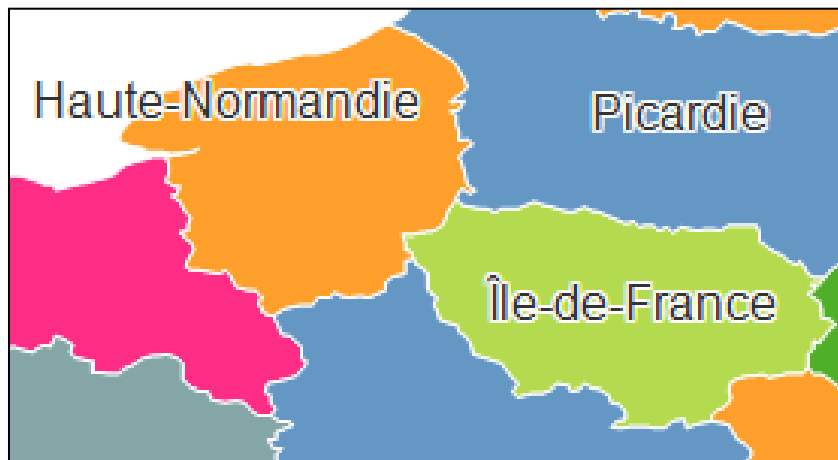
Drive home the meaning in your data by using images directly as marker labels (scatter plot only) or as tooltips (in all plots except Box Plot).

If you can get the image into the dataset, or access it via URL (see below), then you can show it right in your analysis. Show chemical structures, geospatial geometry, corporate logos, brand logos, advertising campaign artifacts, and more.



## Label Map Regions Quickly & Easily

When using the interactive shape mode of the Spotfire Map Chart, you can now label the shapes. Especially in geographic mapping cases, it is not always easy to determine the best location for a region's label, so this is why Spotfire 3.3 will let you manually determine where to place region labels. Just right click the map and choose to "Edit Label Positions."



7. Set labels and label positions when using interactive shape mode of the Map Chart.



# Easing the Burden on IT

## Spotfire Qualification

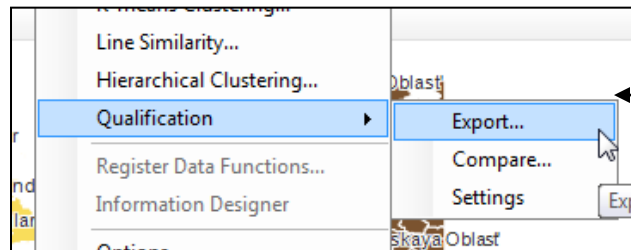
### Validate Spotfire Installation and Application Performance: Installation Qualification (IQ) and Operational Qualification (OQ)

We are pleased to announce a new product: **Spotfire Qualification 3.3**. This product was designed to address the requirements of highly regulated industries, such as clinical trials. This new product, therefore, may also address the needs of organizations that are not as highly regulated, but that nonetheless seek to establish more rigor in validating the proper the installation and operation of our software.

We understand that up to half the development time for any highly regulated software solution is wrapped up in validating the installation and performance of software, especially for software systems involved in storing, calculating, and presenting data. We also understand that the high cost of validation, and all its accompanying documentation, can prevent organizations from getting the most out of a product like Spotfire, whose core benefits lie in agility and freedom to quickly respond to changing conditions. Helping our customers reduce costs associated with validation helps you get more out of your Spotfire investment.

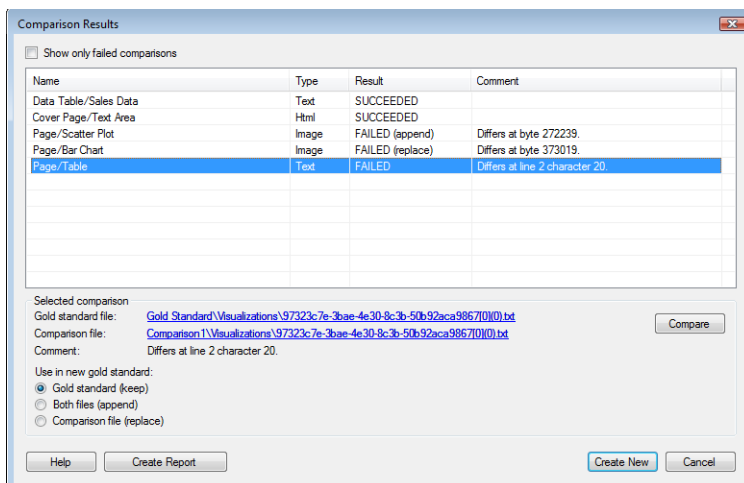
How to we speed up validation processes? (From the Spotfire Help documentation)

*“TIBCO Spotfire Qualification allows you to verify that an analysis in TIBCO Spotfire gives the same results on different installations of TIBCO Spotfire. This is done with the TIBCO Spotfire Qualification tool that exports all parts of an analysis for a user-defined ‘gold standard’ application. The tool can then automatically compare that gold standard with exports performed on other computers, or after upgrades of TIBCO Spotfire.”*



Tools to export and compare spotfire file contents are under:

Tools → Qualification

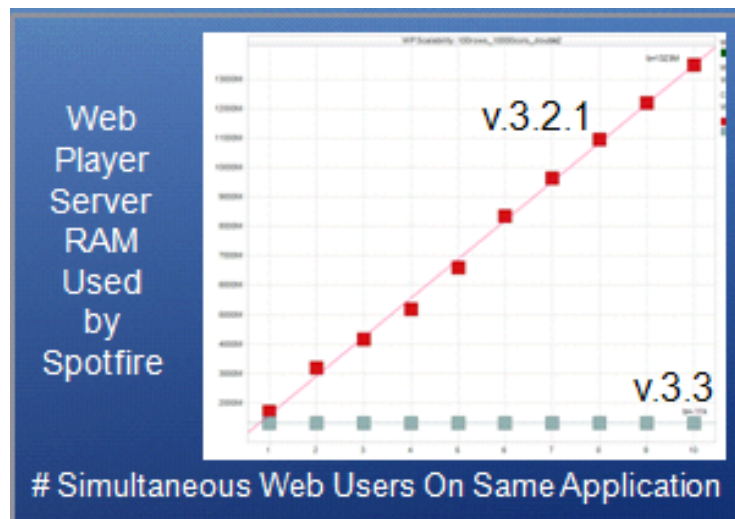


8.A sample result after automatically comparing the exports of the same Spotfire file from two different Spotfire installations.

This makes it easy to verify that Spotfire is successfully installed and is working as expected compared to known good previous

## Spotfire Web Player: More Efficient Memory Utilization

Many Spotfire customers will be able to support a greater number of web users on their existing hardware by upgrading to 3.3. Spotfire Web Player 3.3 includes significant improvements in memory consumption, with the disclaimer that this only applies to certain usage scenarios. Our goal was to minimize the amount of system memory needed to support larger numbers of simultaneous users on the same analysis file. You should find that the larger the file and the greater the number of simultaneous web users on that file, initial system memory required to support each additional user is greatly reduced compared to previous versions. In other words, each additional simultaneous user of a web analysis initially claims very little additional system memory. We hope this allows customers expand usage of Spotfire Web Player with this significant leap in scalability.



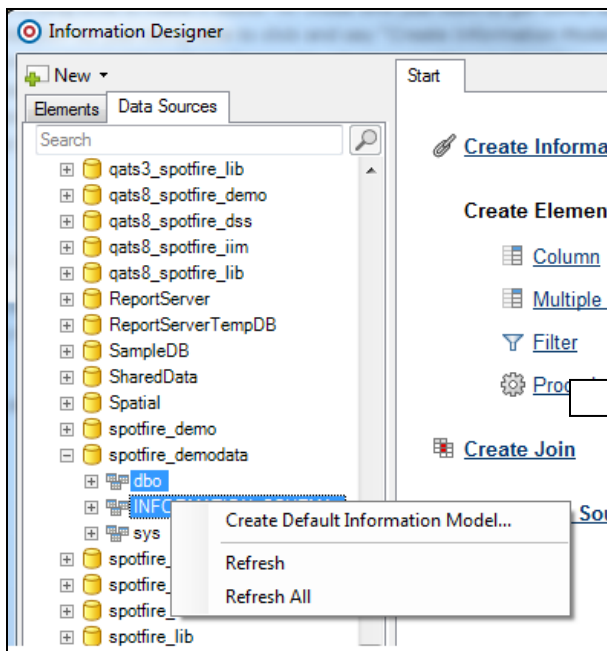
## Server Installation Manual: For the System Administrator

We continue to improve the Spotfire Server installation process and make the manual easier to follow for your tasks. Be sure to follow the manual with every new release.

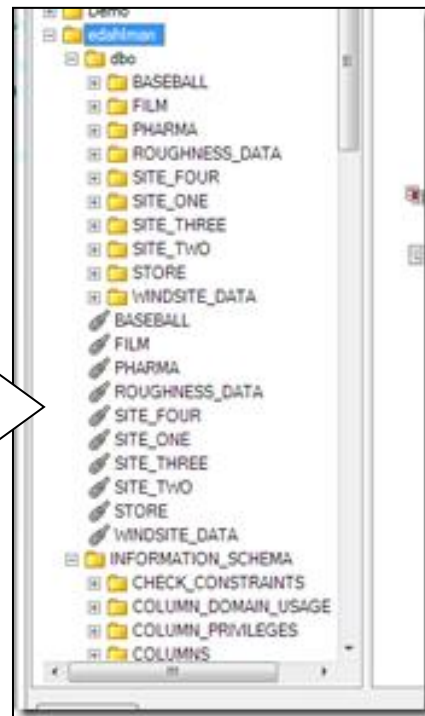
## Smart Mappings: Automated Creation of Information Models

Spotfire 3.3 Information Services users can automatically generate 1-to-1 mappings of the existing tables and columns in their Data Sources. Just generate a Data Source in Spotfire, then right click it and select “*Create Default Information Model...*” This helps a lot when the work has already been done to nicely model and expose tables for business applications such as Spotfire, so the mapping step is more about transparency than transformation. For example, if you use Spotfire Application Data Services, you do the work in ADS to expose Spotfire-ready tables and columns, so a simple transparent mapping of those elements through Spotfire Information Services can now be accomplished in one click. Note that the automated creation will work through nested levels of data objects in the data source you supply.

The result is a folder structure that matches the catalogs, schemas etc. that were selected with a column element for each column and an information link for each table containing those column elements. Procedures will get a procedure element and an information link of their own if they return data.



10. Right-click on Data Sources in Spotfire 3.3 reveals the option to automatically model all the tables, columns, and procedures in that Data Source.



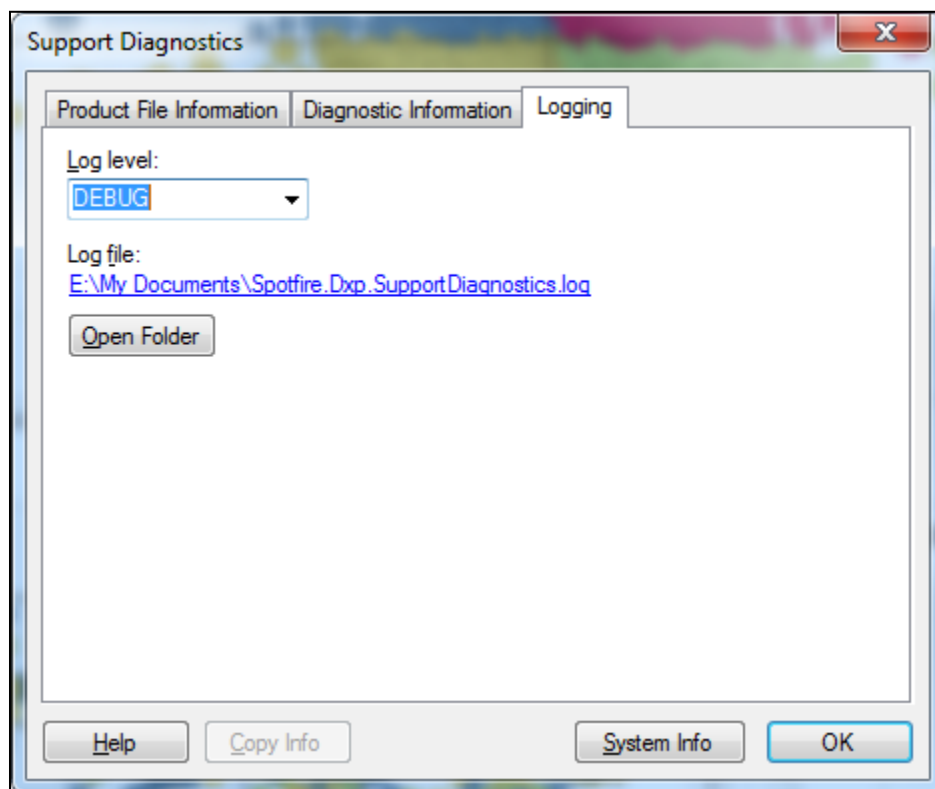
9. An example of the results after choosing to “Create Default information Model” for a Data Source.

## Increased Uptime of Spotfire When Changing Configuration

Now, Spotfire system administrators can view and edit the current server configuration without stopping the servers in the cluster. The services don't have to be stopped until any new changes are saved and applied.

## Client-Side Logging for Troubleshooting Purposes

The logging has been enhanced to provide more information needed to debug issues. You can now change the client logging level and easily get access to the log itself by going to Help > Support Diagnostics > Logging.



11. The Support Diagnostics tool for Spotfire Professional makes it easier for support staff to address user problems by allowing users to quickly set their logging level and easily access the client log file itself.

# Spotfire Training Update

---

With today's economy, many companies are experiencing cuts in training and travel budgets. Spotfire's training department has been working to create economical training options like virtual classes to provide high quality content that still provides a high return on investment. [Click here](#) to see our many training options that will meet your learning needs as well as your budget.

---

We hope you are as excited about these new capabilities as we are! We work tirelessly to apply more than a decade of collective experience to continuously improve the way you interact with and analyze data. Our team is dedicated to helping you and your organizations win by rapidly discovering new insights in information and we are committed to delivering the fastest and most adaptable analytics platform in the market. Thank you for your continued interest and please drop us a line with any questions you may have.

**The Spotfire Team**

## How to Upgrade to Spotfire 3.3

### **License Administrators:**

Accounts with current maintenance agreements using their predefined download credentials should download the latest Spotfire software from the TIBCO download site at <http://download.tibco.com>.

### **Users:**

End users should contact their organization's TIBCO Spotfire® Analytics Server Administrator to determine when their site will be ready to upgrade and deploy to the latest release. Once deployed on the Spotfire® Analytics Server, TIBCO Spotfire clients on previous versions will automatically update after next login.

If you need assistance, reference the Product Download Site Help section or contact TIBCO Spotfire Support at: <http://support.spotfire.com>

#### About TIBCO

TIBCO Software Inc. is a leading provider of enterprise analytics software for next generation business intelligence. TIBCO Spotfire products offer a visual and interactive experience that helps professionals quickly discover new and actionable insights in information. Distinguished by its speed to insight and adaptability to specific business challenges, TIBCO Spotfire products rapidly reveal unseen threats and new opportunities, creating significant economic value. TIBCO Spotfire customers include industry leaders among the Global 2000 that have deployed TIBCO Spotfire analytics to gain an information advantage over their competitors. For more information, visit <http://spotfire.tibco.com>